

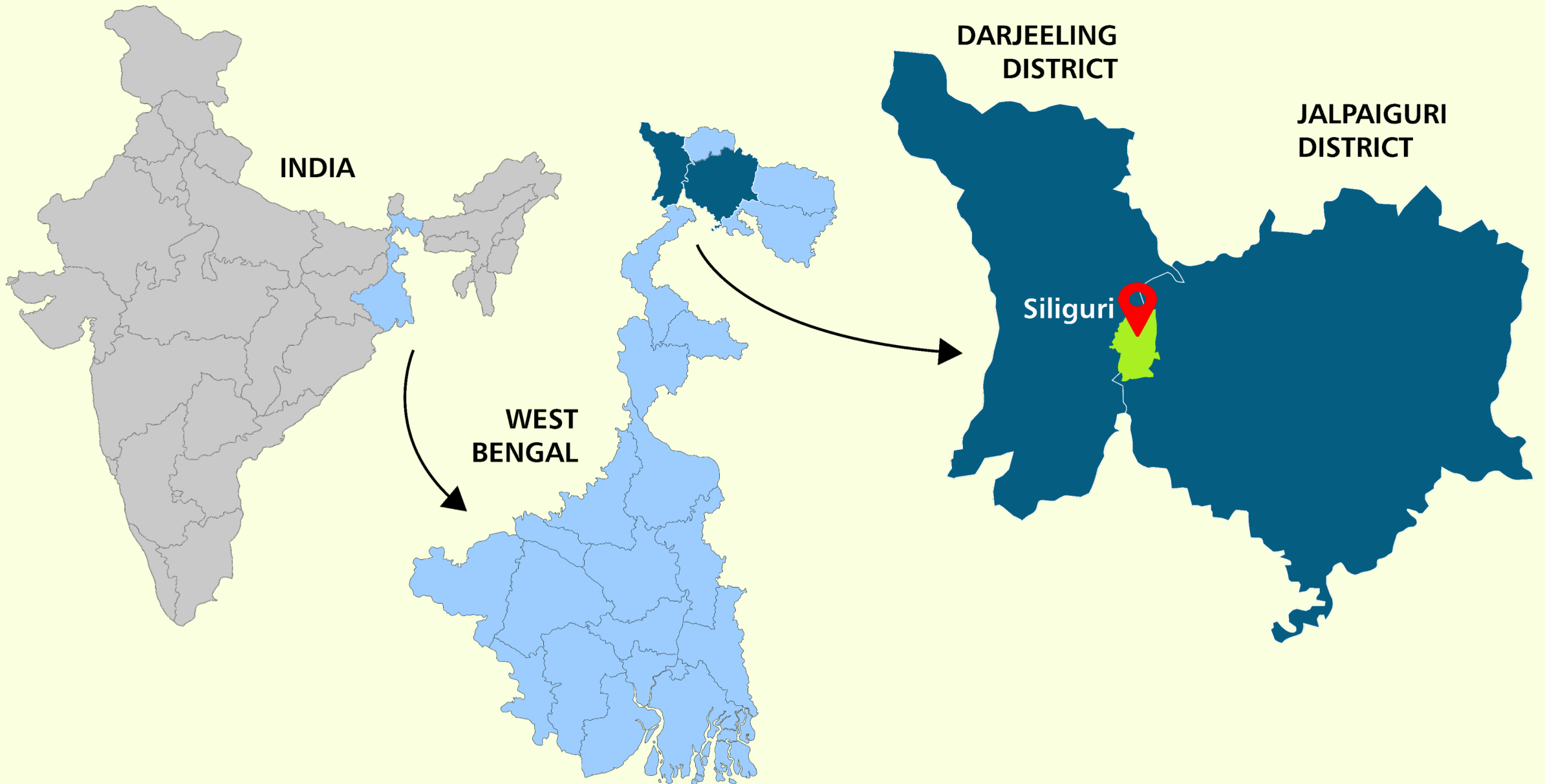
Leasing Deck



Siliguri (WB)



Where is Siliguri?



About Siliguri...

- Siliguri is also known as the "**Gateway of Northeast India**".
- It is located on the banks of the **Mahananda** and the **Teesta River** in the foothills of the Himalayas.
- The name Siliguri means "**stack of pebbles**" and refers to the boulders that once lined the Mahananda and Teesta rivers.
- The Urban area of Siliguri is spread over **Darjeeling** and **Jalpaiguri** districts in the Indian state of West Bengal, and is a major Tier-II city.
- Siliguri is popular for three Ts: **Tea, Timber and Tourism**.
- Siliguri is the **third largest urban agglomeration** in West Bengal, after Kolkata and Asansol.
- Durga Puja, Ganesh Puja, Chhath Puja, Laxmi Puja, Diwali and Saraswati Puja are major festivals..



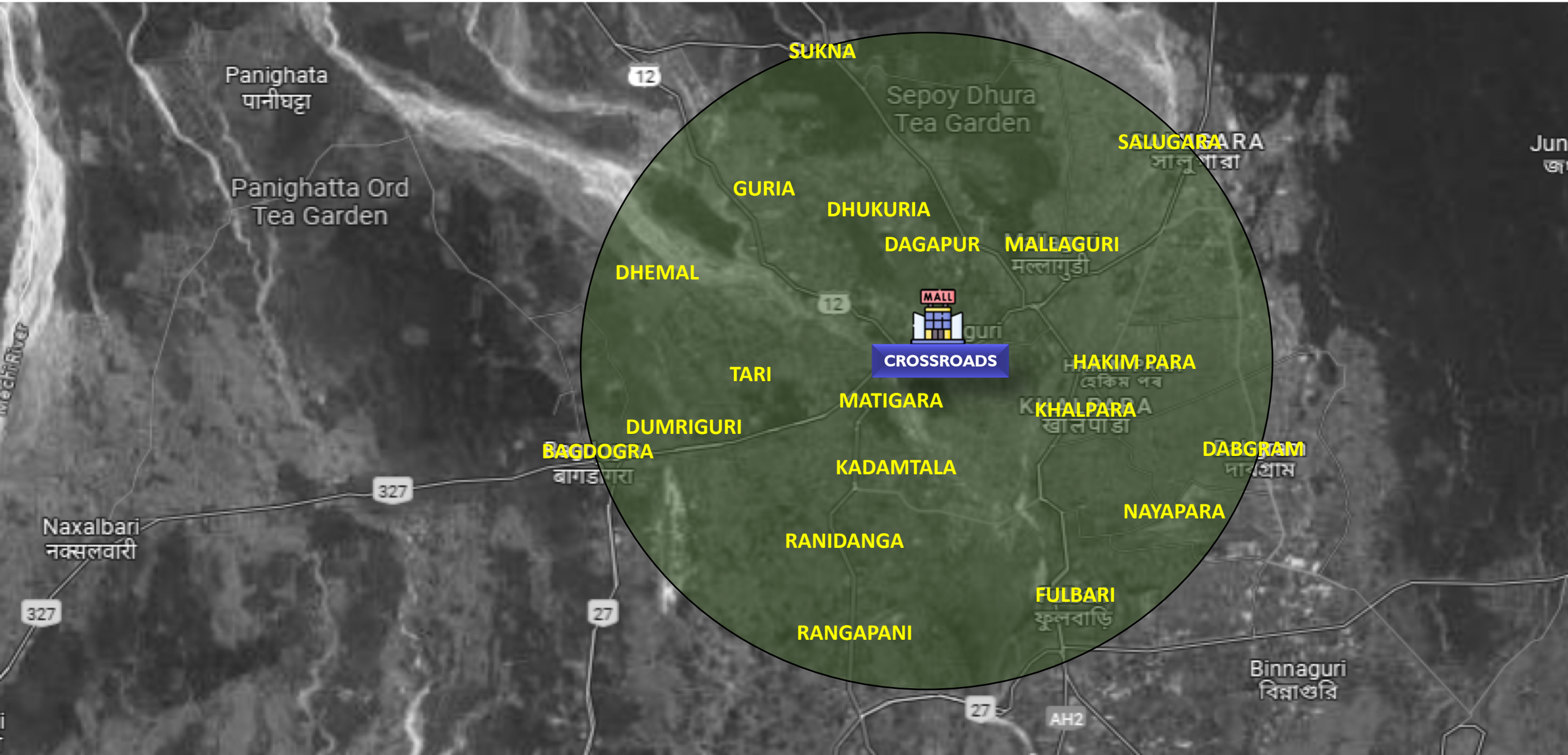
Proposed Façade



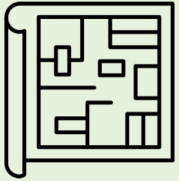
Location Map...



Primary Catchment – 10km



Mall Snapshot...



BUA
3,50,000 Sq. Ft.



Multiplex
4 Screen



7 Anchors and
Mini Anchors



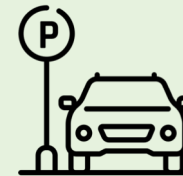
80+
Vanilla Shops



11
Restaurants



Food Court
500+ sitting



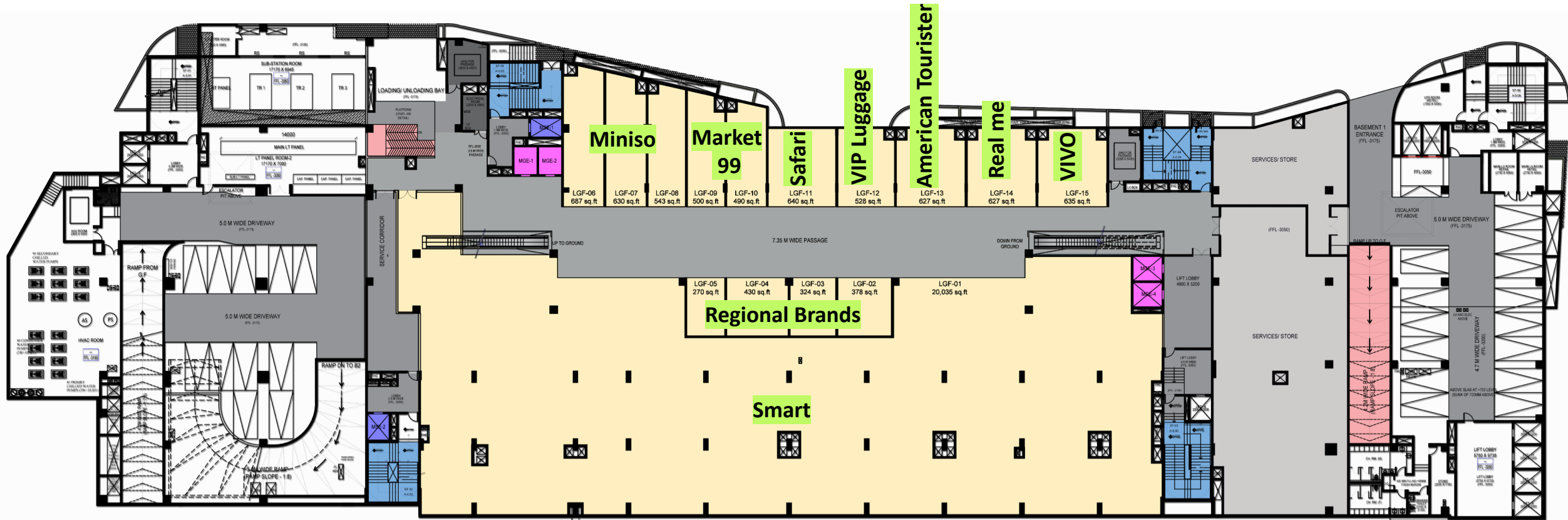
500+
Car parks



Floor Plans

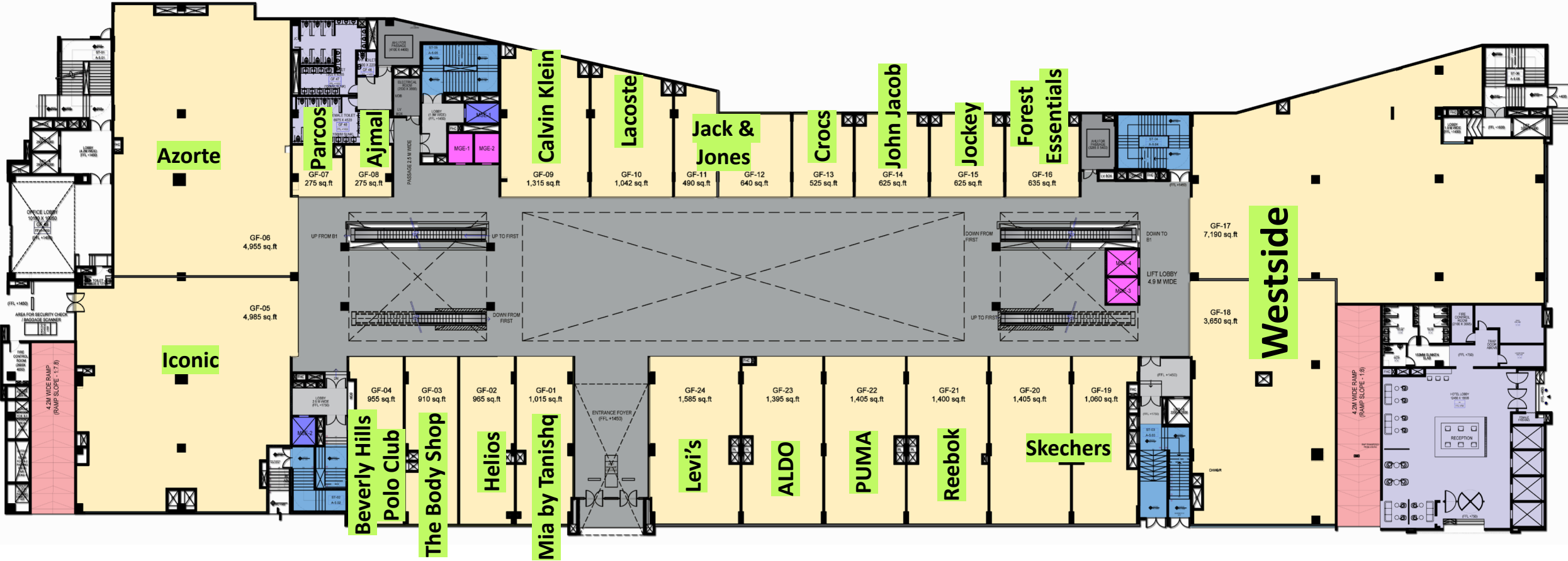
Lower Ground Floor

Brand Names	Under Discussion
Brand Logos	Signed



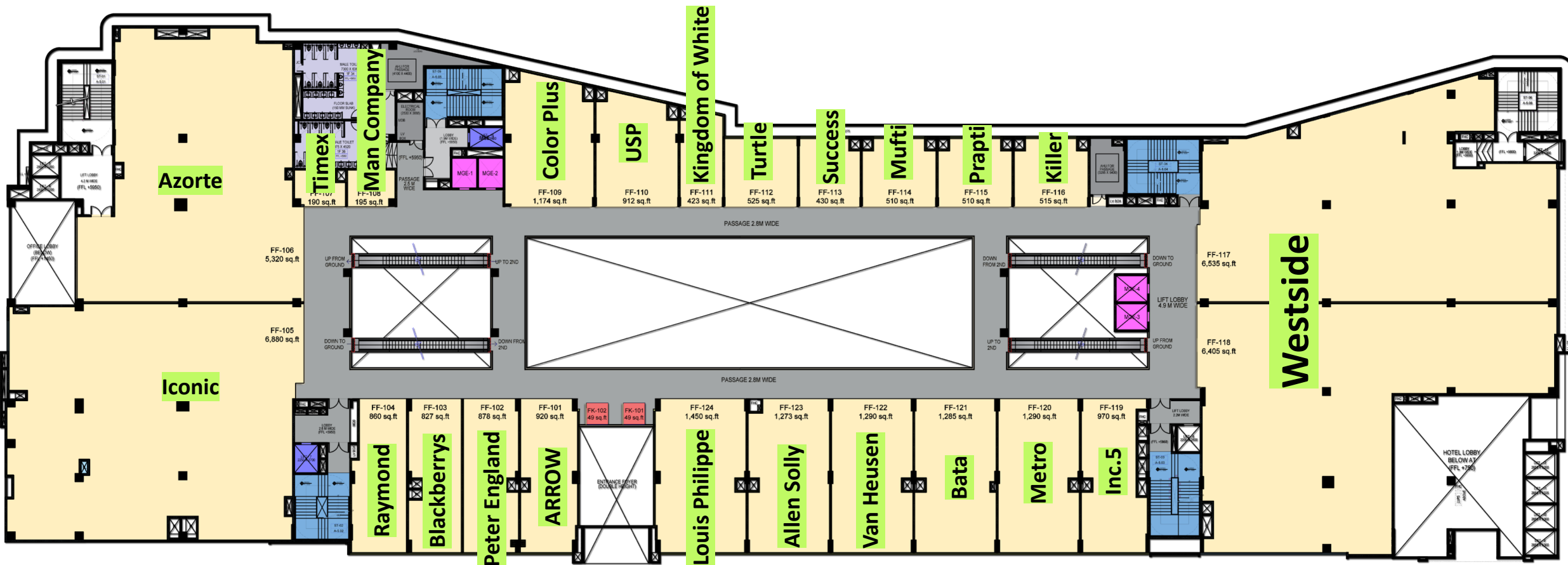
Ground Floor

Brand Names	Under Discussion
Brand Logos	Signed



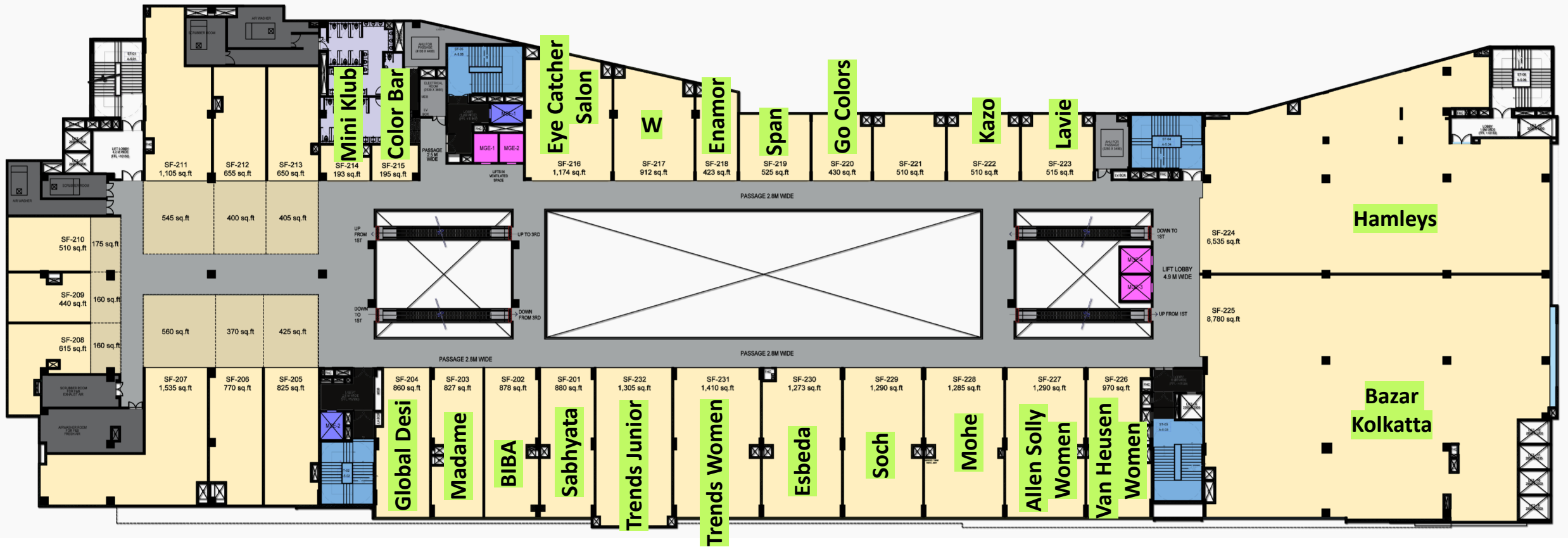
First Floor

Brand Names	Under Discussion
Brand Logos	Signed



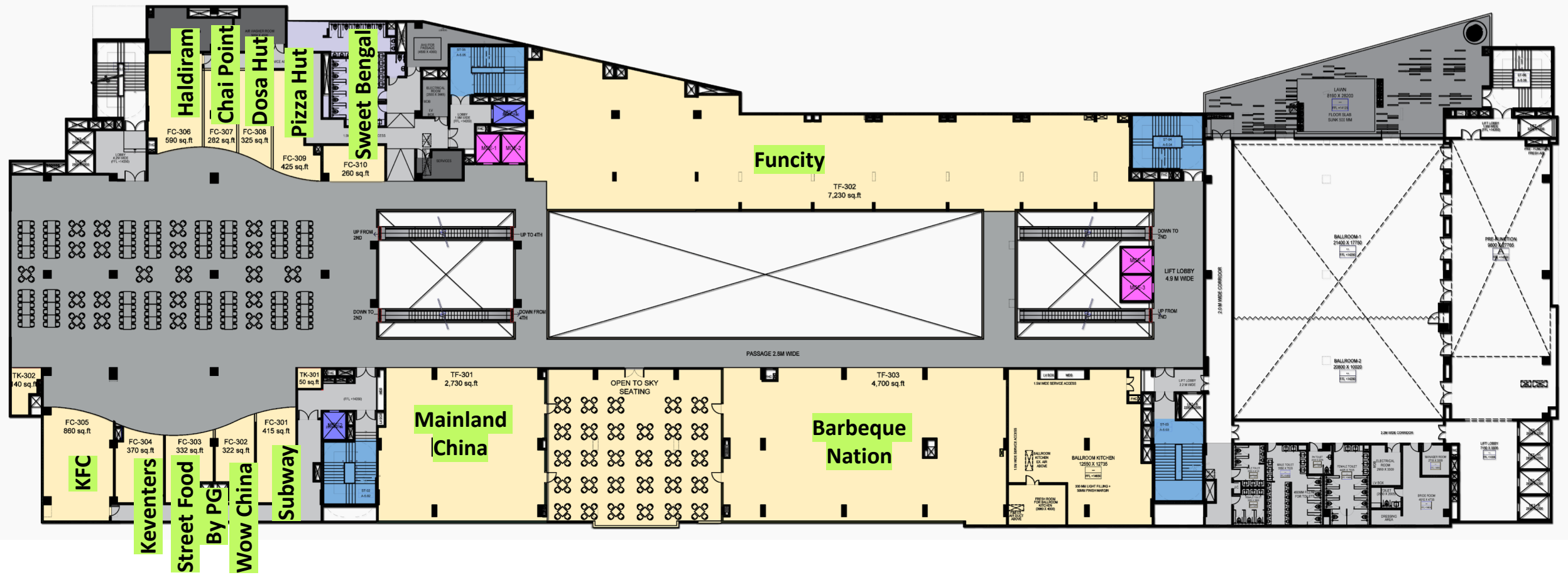
Second Floor

Brand Names	Under Discussion
Brand Logos	Signed



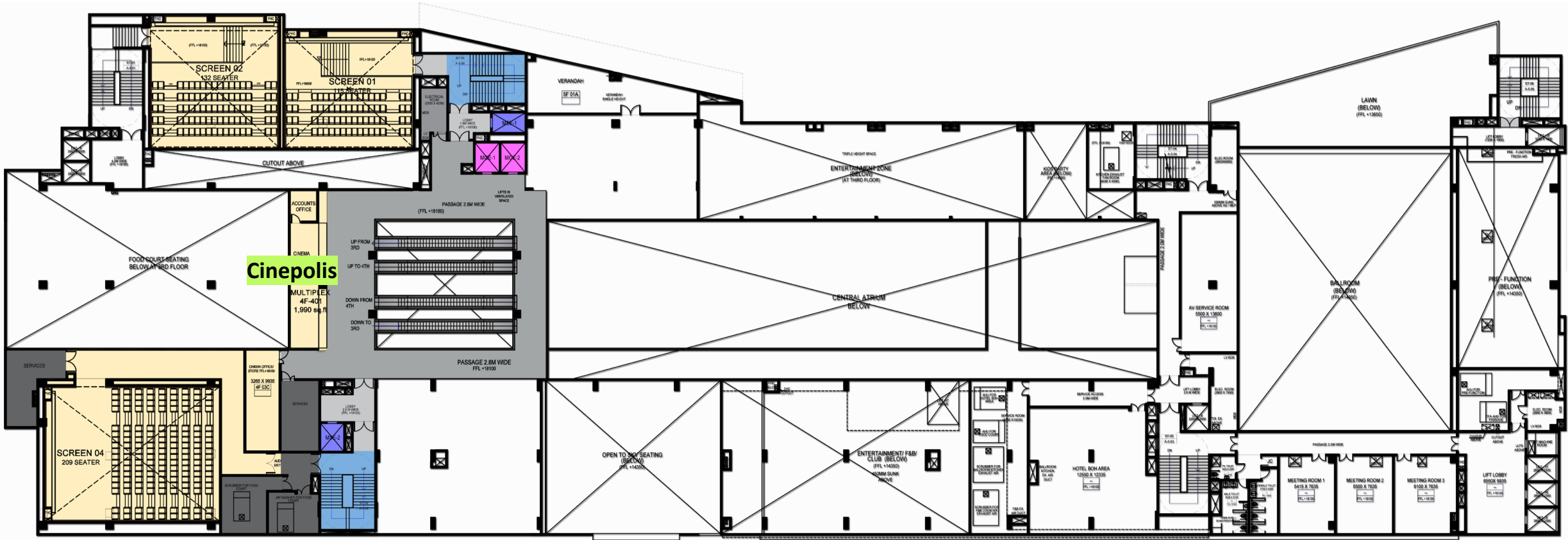
Third Floor

Brand Names	Under Discussion
Brand Logos	Signed



Fourth Floor

Brand Names	Under Discussion
Brand Logos	Signed



Cinopolis

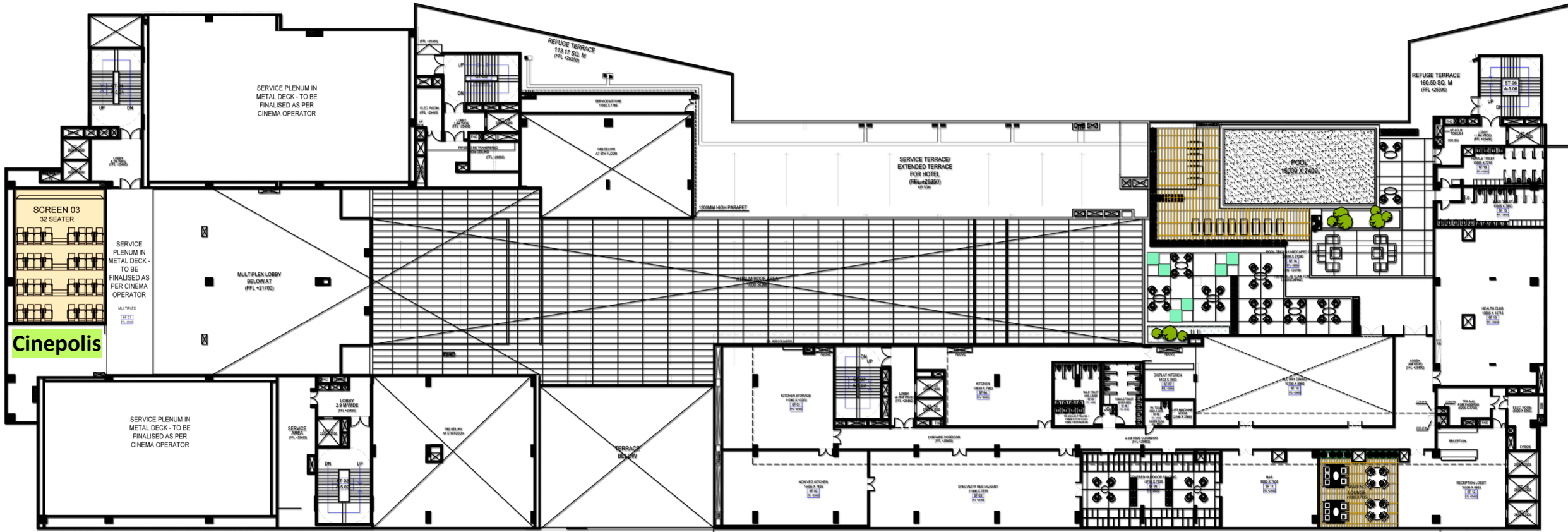
Sixth Floor

Brand Names

Under Discussion

Brand Logos

Signed



Detail for Retail...

- **Prime Location** - On the Highway AH2.
- **Siliguri, third largest city** of West Bengal.
- **City population of 10,00,000** + big tourist population being the prime catchment.
- **Dedicated parking for 500+ cars.**
- **Bagdogra Airport 12kms** and **Siliguri Railway station 3kms** from the Mall.
- **Economy driven by 3 Ts - Tea, Timber and Tourism.** And also Trading.
- **Tourists on way to Kurseong, Kalimpong, Darjeeling, Gangtok, etc** have to travel via Siliguri.



Concurrently Leasing...



CDR Mall (Madurai)



Value Mall (Erode)



Grand Galleria (Purnia)



City Centre (Asansol)



Langval Mall (Thanjavur)

**EXCLUSIVELY CONCEPTUALIZED,
MARKETED & LEASED BY**



Leaseline +91-90041-41256
leasing@beyondsquarefeet.com