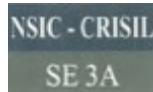


# Leasing Presentation



*Bharuch, Gujarat*



MEMBER OF  
MIDDLE EAST  
COUNCIL OF  
SHOPPING CENTRES



Member of  
International Council  
of Shopping Centers

The 'beyond squarefeet' logo, with 'beyond' in a small blue font above 'squarefeet' in a large, bold, blue sans-serif font. Below it, the tagline 'shopping mall specialist™' is written in a smaller, black sans-serif font. To the right of the text is a graphic of several overlapping blue squares of different sizes, with a small 'TM' symbol at the top right.

India | Iran | Nepal | Nigeria | Oman | Qatar

# Presenting the First Mall in Bharuch District !



*The most happening place to be  
in the entire region*



RKMALL

PVR  
CINEMA

Enter text

Enter text

Enter text

Enter text

Enter text

Enter text

Enter text

Enter text

Enter text

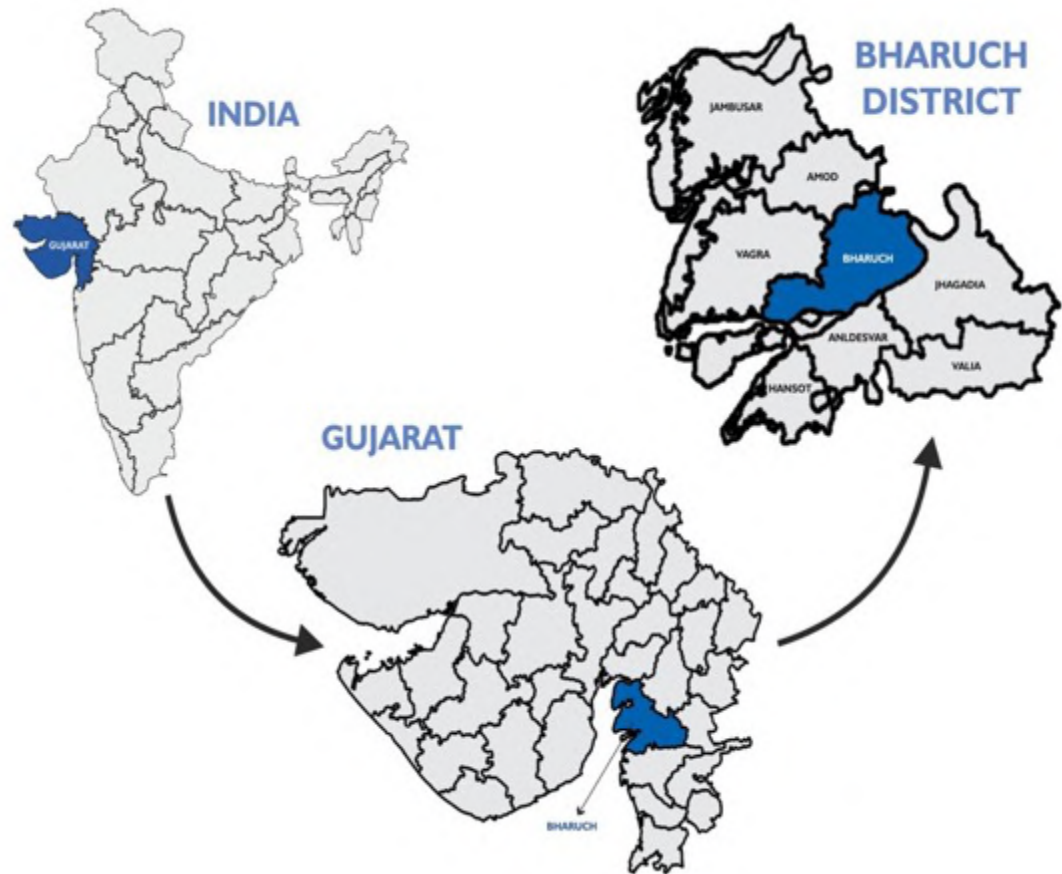
Enter text

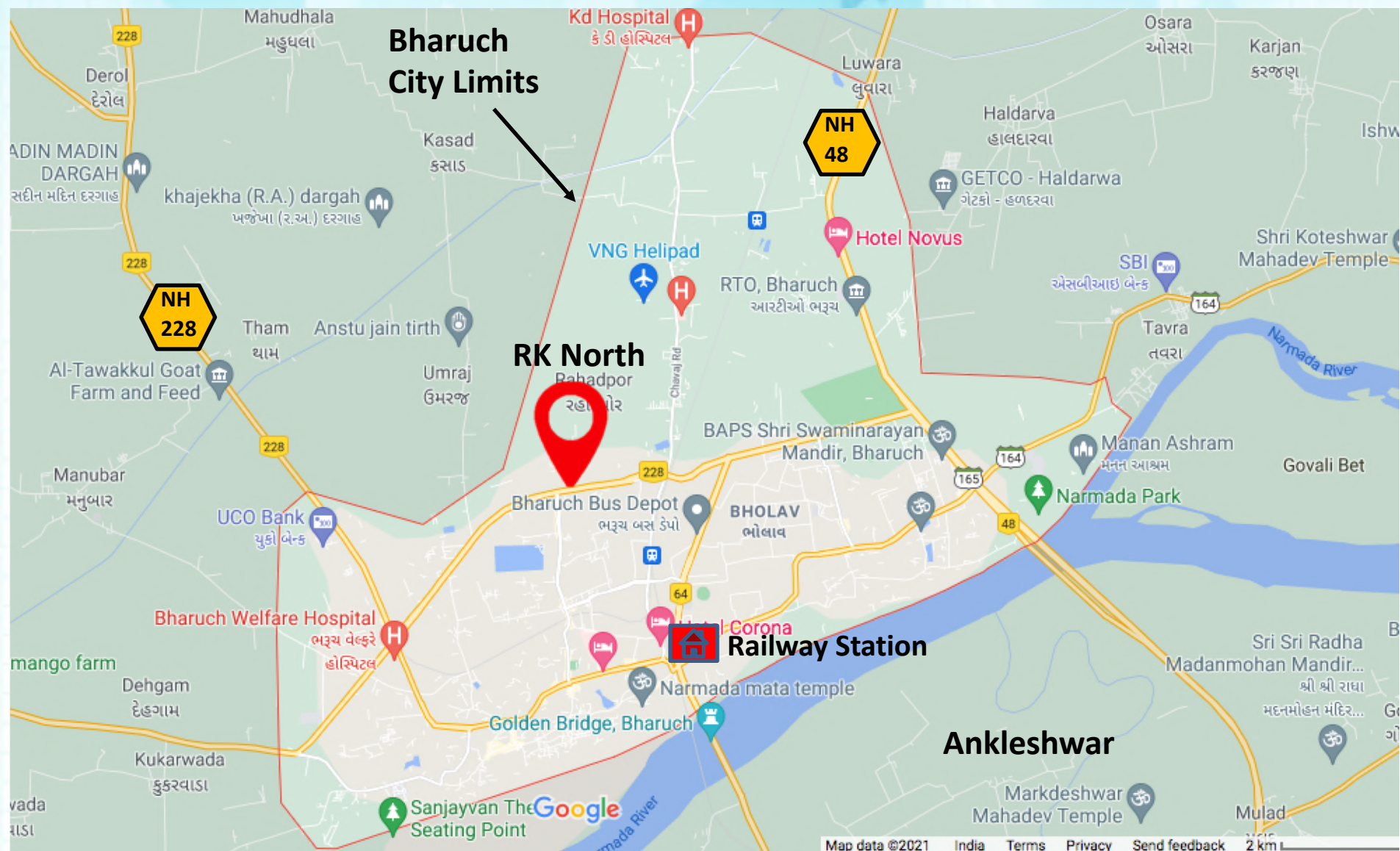




# CITY SCAPE

- **Bharuch** is the second **Oldest City** of India.
- It is referred to as the **Chemical & Pharma Capital of India**.
- Bharuch is **well connected** by Road & Rail
- Because of the distinctive color of its soil, Bharuch is sometimes referred to as ***'Kanam Pradesh'***
- It is nicknamed **Peanut City & City of Fertilizers**.







- **Only Mall** in about 50 kms radius
- **100% Leased Model** Mall with 5 star hotel
- Developed by **Reputed Developer** of Bharuch (RK Group)
- **Growing Population** (floating & native) with **Young spenders**
- **Prime Location** – Access from Dahej By Pass – Developing **High Street**
- Very **Encouraging Trading Density** Numbers
- **Over 50 National & Regional Brands** already present in the city.
- With inauguration of Narmada Maiya Bridge **Ankleshvar as twin city has further come closer.**

Particulars	Bharuch District	Bharuch City
<b>Area</b>	6509 Sq.Km	35.34 Sq.Km
<b>Temperature</b>	Winter Min 8.9° C Summer Max. 43.2° C	
<b>Avg. Rainfall</b>	800 mm	
<b>Population</b>	15,51,019	2,80,178
<b>Density</b>	238 persons/Sq.Km	7,928 persons/Sq.Km
<b>Literarcy</b>	81.51	87.27 %
<b>Sex Ratio</b>	925	947

The population of Bharuch as per census 2011 was about 2.80 lakhs which as per local estimates would be **about 5.0 lakhs** now. If we add the population of twin city Ankleshvar, the total population crosses **7.5 lakhs**.



- Bharuch is a **port city** situated on the banks of the Narmada river. The nearest port is Dahej.
- Bharuch district is surrounded by **Vadodara** (North), **Narmada** (East) & **Surat** (South) districts. To the West is the **Gulf of Khambhat**.
- Bharuch is **well connected** to the rest of India by Indian National Highway NH8 (Mumbai to New Delhi) & by the Western Railway Division of Indian Railways.
- **Bharuch & Ankleshwar** have become **twin cities** in true sense with the recent launch of Narmada Mayya Bridge (**travel time of 15 mins**).
- Bharuch is one of the most **heavily industrialized areas**, not only in Gujarat but in India as a whole with large chemical plants producing fertilizers, paints, dyes, cotton, textiles & dairy products.
- Petronet LNG Ltd, one of the fastest growing companies in the Indian energy sector, has set up the country's first LNG receiving and regasification terminal in Dahej. Dahej nowadays is considered to be the fastest growing industrial area with companies like ONGC, GNFC, Alliance Tyre Group, ABG Shipyard, First carbon, Indofil, Birla copper, Adani, Reliance.

- Large Indian and multinational companies like **GNFC, Torrent Group, Pepsi Co International, Guardian Corporation, Hitachi, Heubach Colors, Zydous Cadila Health Care, Survival Technologies, Videocon, China Light and Power, BASF, Reliance, Tata Group, Aditya Birla Group, Welspun Stahl, Aventis, Gulbrandsen Technologies, Wochardt, Rallis, Pfizer, Ciba, L & T, Bayer, Glenmark, UPL, Lupin, J.B.Chemicals, Gujarat Fluorochemicals, NTPC, ONGC, GAIL, OPaL, Solvay, Breeze Intermediates for Flavor & Fragrance Intermediates, Alliance Tyre Group, Fireminich, Astra Specialty Compounds, Dahej and GPEC**, have setup manufacturing units in and around Bharuch.
- Bharuch has a **good number of schools and colleges** providing education in various under – graduate and post – graduate streams, Narmada College OF science & Commerce is the prominent known college.
- There are also several **Pharmacy Colleges, Medical College & Agriculture College.**

# Few National Brands in the City







**K J Polytechnic**



**JP College**



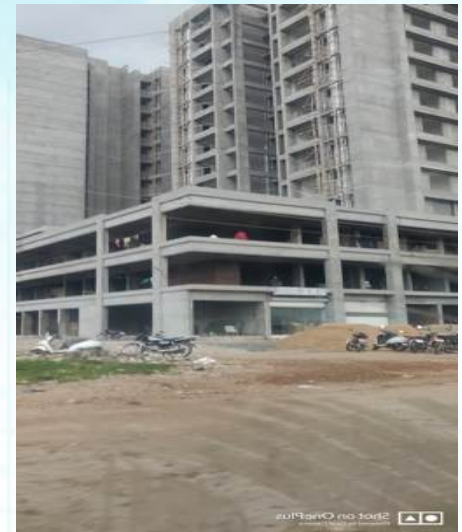
**Amity College**

## College Of Agriculture

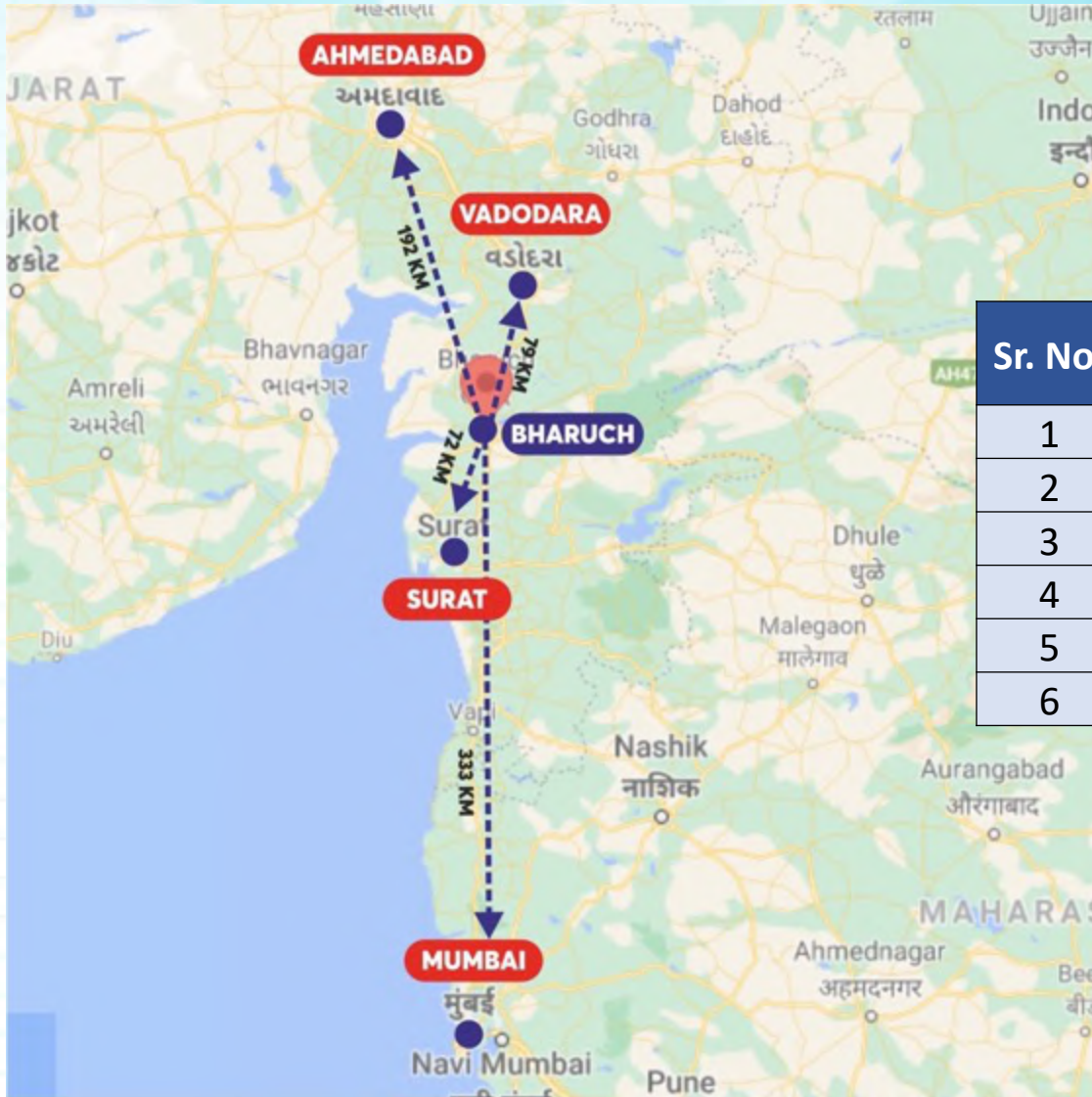




# Typical Residential & Commercial Bldgs.



# Distance from Few Major Cities



Sr. No.	Town	Distance (kms)	Distance in Tme (Hrs)
1	Vadodra	80	1.2
2	Surat	72	1.1
3	Mumbai	333	5.0
4	Ahmedabad	192	3.5
5	Gandhinagar	214	4.0
6	Rajkot	373	6.5





# MALL INFORMATION



- **Mixed Used Development** of about 5.0 lakhs sq ft BUA
- **5 Star Hotel** with above 150 keys complimenting the Mall
- **GLA:** **2,50,000 Sq.ft.**
- **Multiplex:** **3 Screen**
- **Anchor:** **14 Anchors & Mini Anchors**
- **Vanilla Shops:** **65+ National / International brands**
- **Food-Court:** **Double Height Food-Court (400+ seats)**
- **Parking:** **2.5 Levels of Parking (350 + Car Parks)**

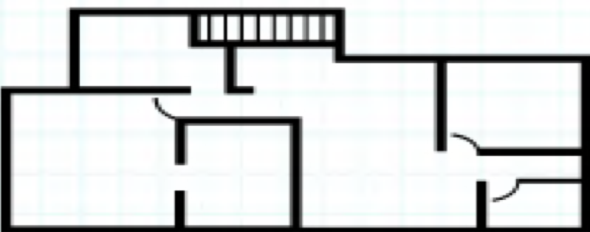


# LOCATION OF MALL



# Location Map





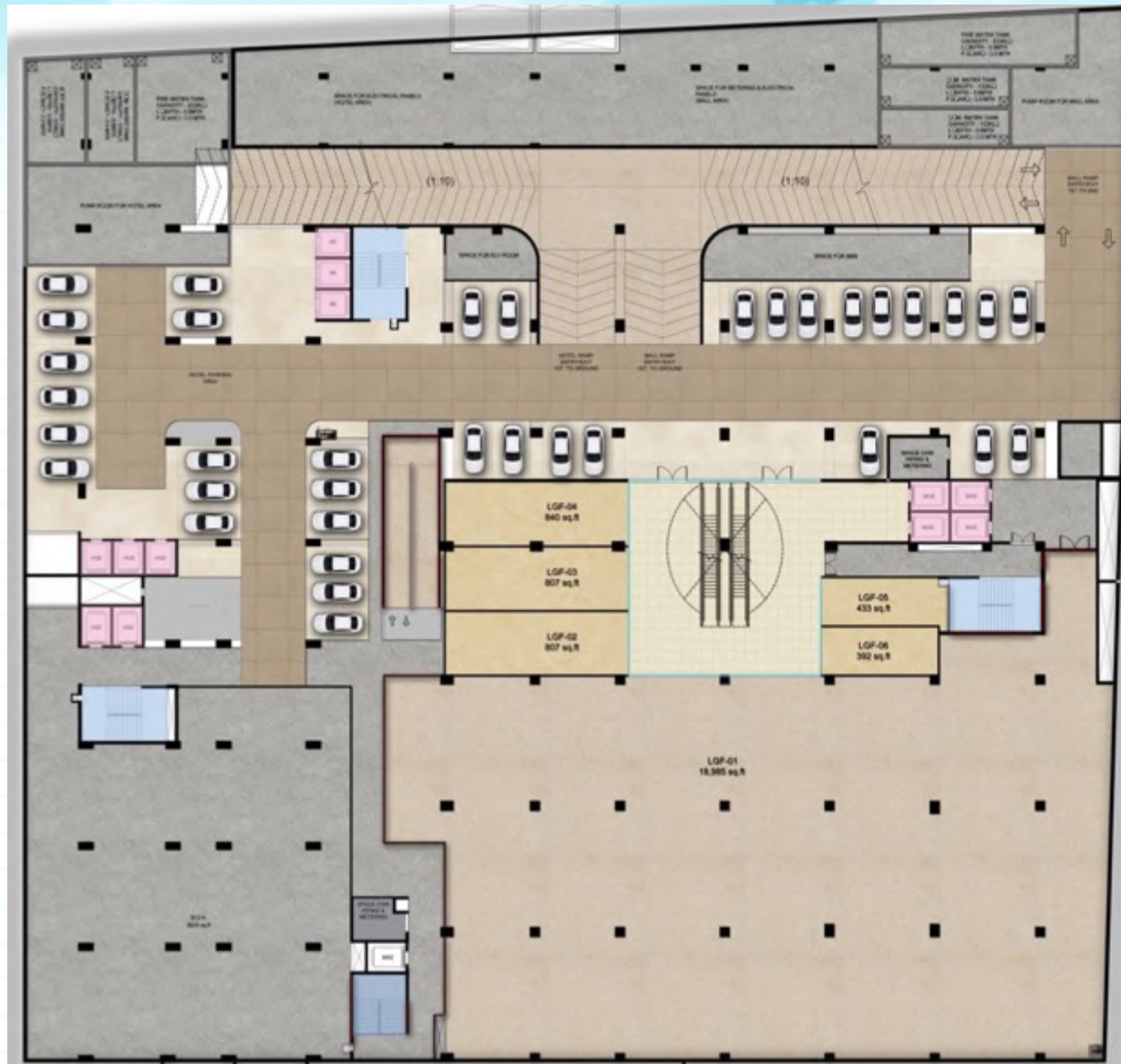
# FLOOR PLANS



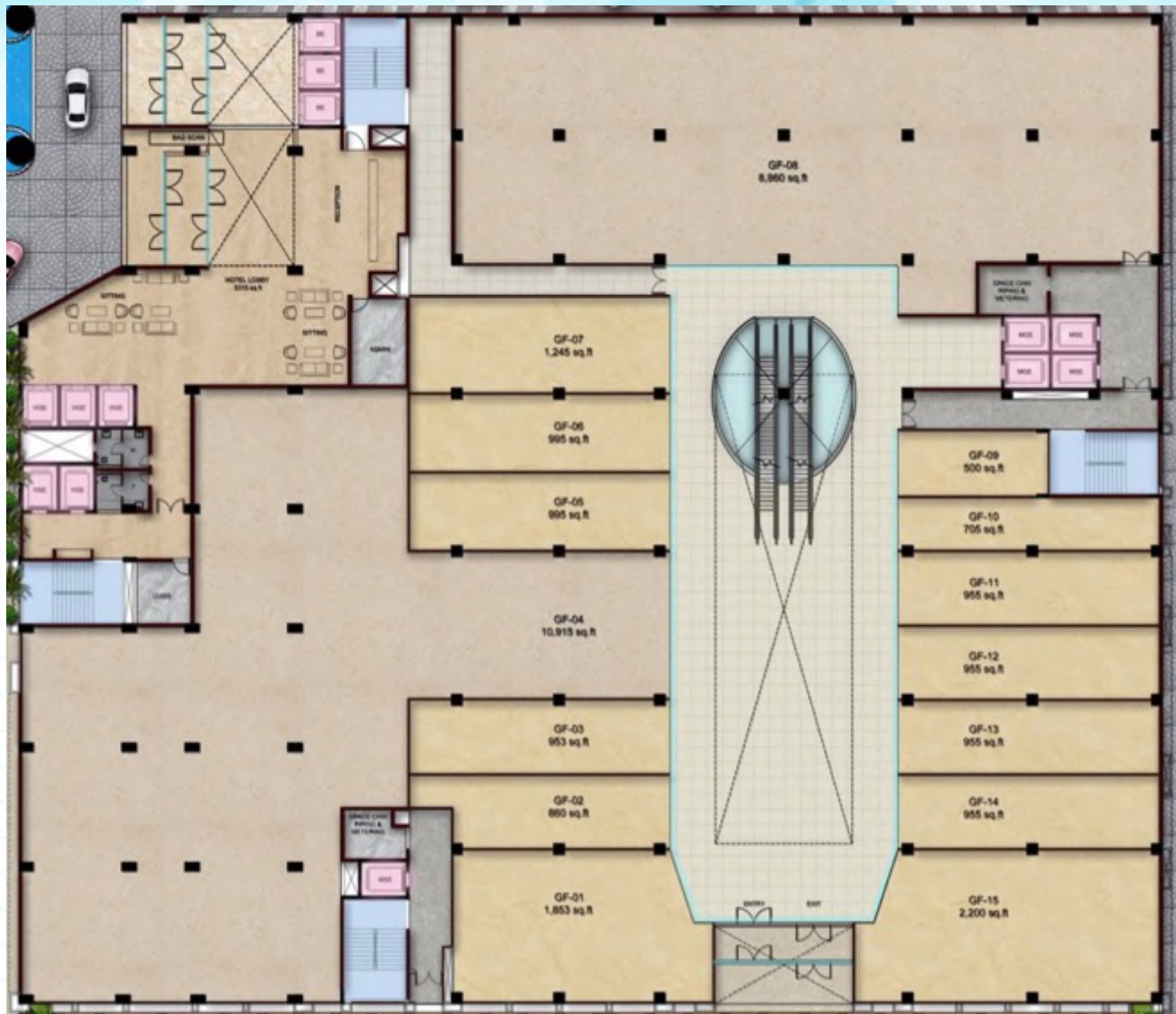
# Site Plan







# Ground Floor Plan



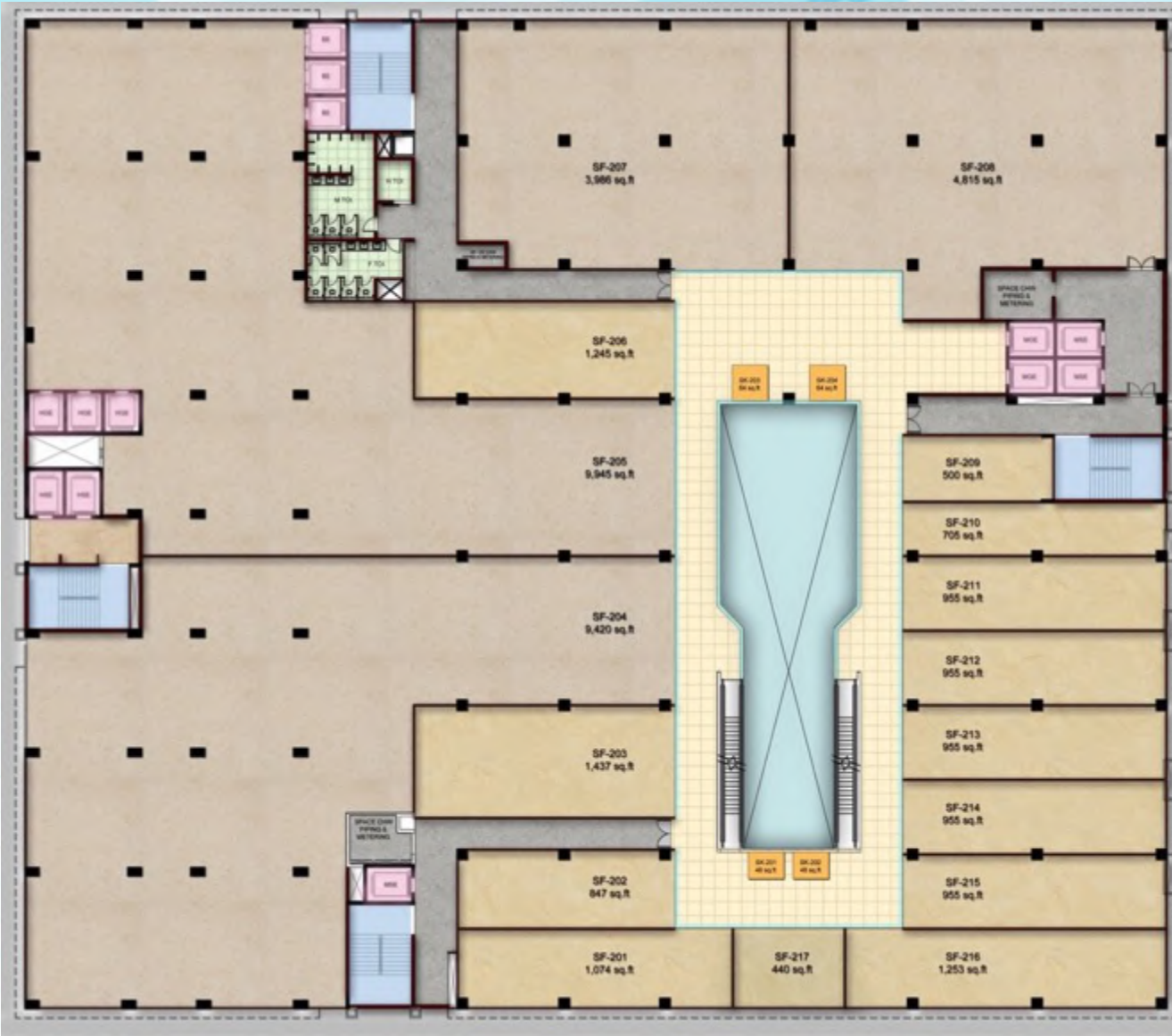


# First Floor Plan





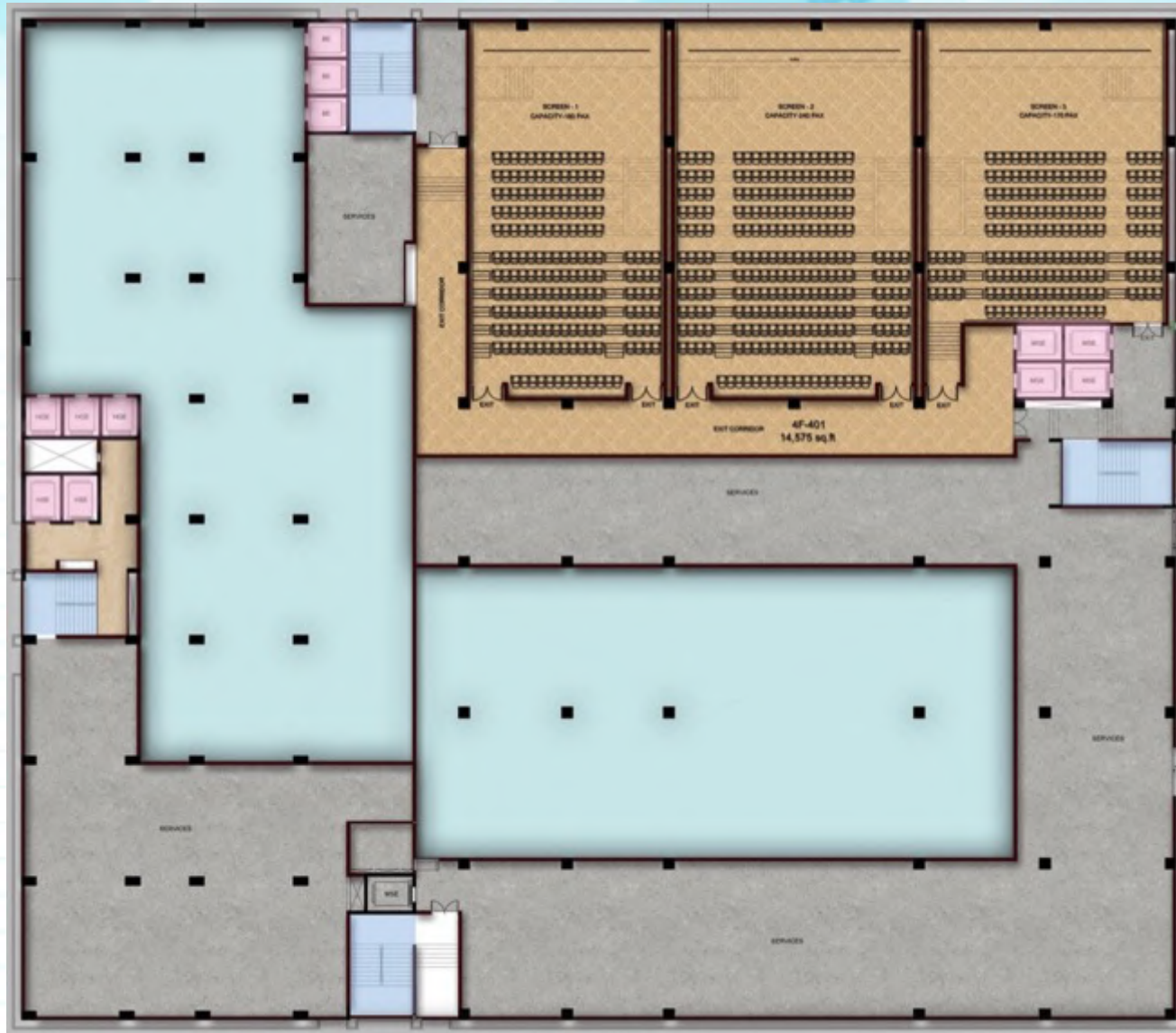
# Second Floor Plan







# Projection Floor Plan





# 3D Perspective View



**For further details please contact:  
*Beyond Squarefeet Advisory Pvt. Ltd.***

**Leaseline : +91.98201.88182  
leasing@beyondsquarefeet.com**





**Langval Mall (Thanjavur)**



**Western Mall (Junagadh)**



**Yen Square (Kerala)**



**Novelty Mall (Pathankot)**



**Cosmo Square (Kharagpur)**



**Capital Mall (Bhopal)**



# THANK YOU!