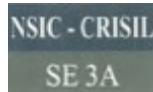


# Leasing Presentation



*Purnia, Bihar*



MEMBER OF  
MIDDLE EAST  
COUNCIL OF  
SHOPPING CENTRES



Member of  
International Council  
of Shopping Centers



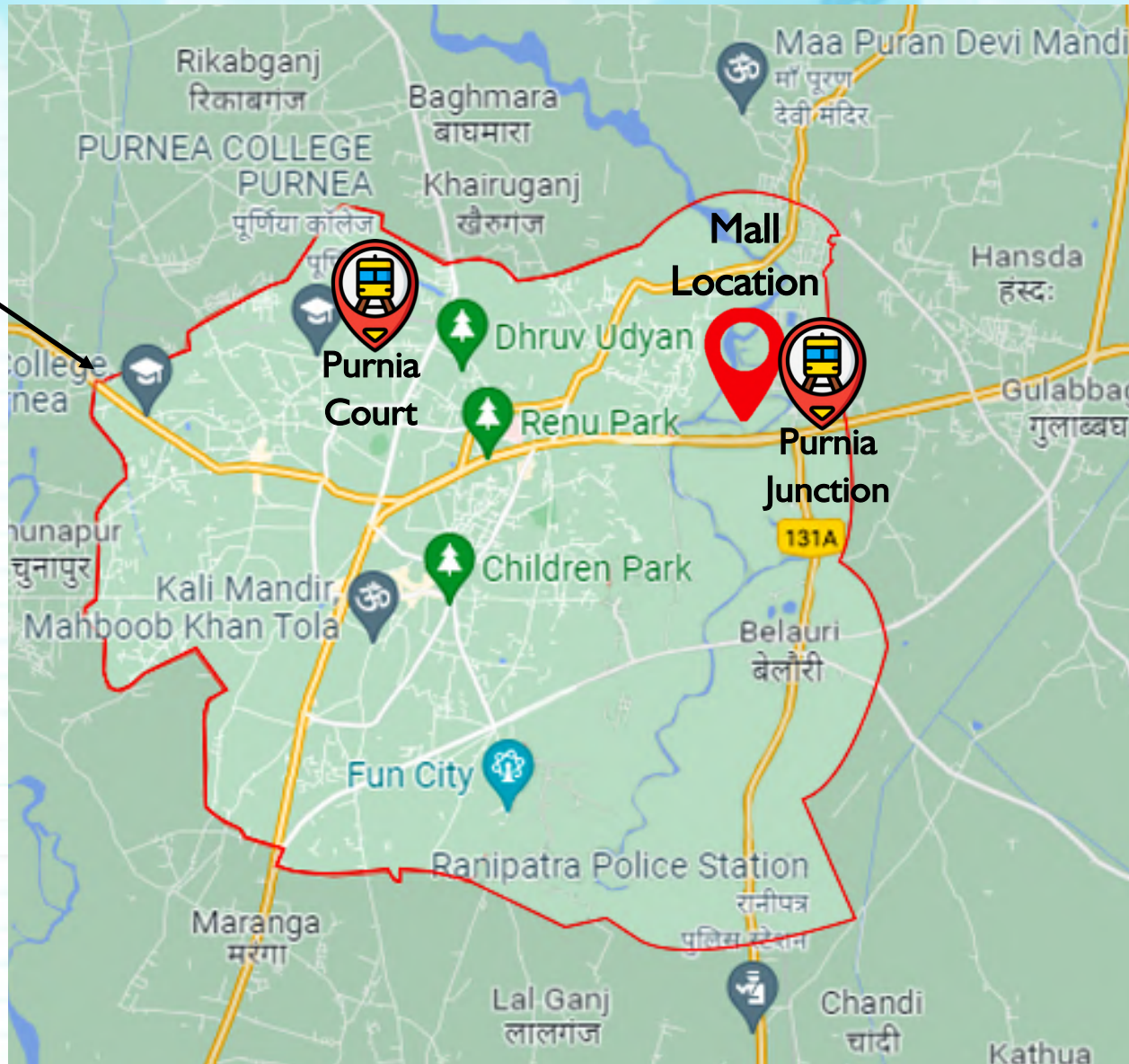
India | Iran | Nepal | Nigeria | Oman | Qatar



- GLA: **1,75,000 Sq.ft.**
- Multiplex: **4 Screen (750+ seats)**
- Anchor: **4 Anchors & Mini Anchors**
- Vanilla Shops: **40+ National / International brands**
- Food-Court: **Lavish Food-Court (350 + seats)**
- Parking: **Parking (150 + Car Parks)**



**Purnia  
City Limits**



Railway Station




Grand Galleria



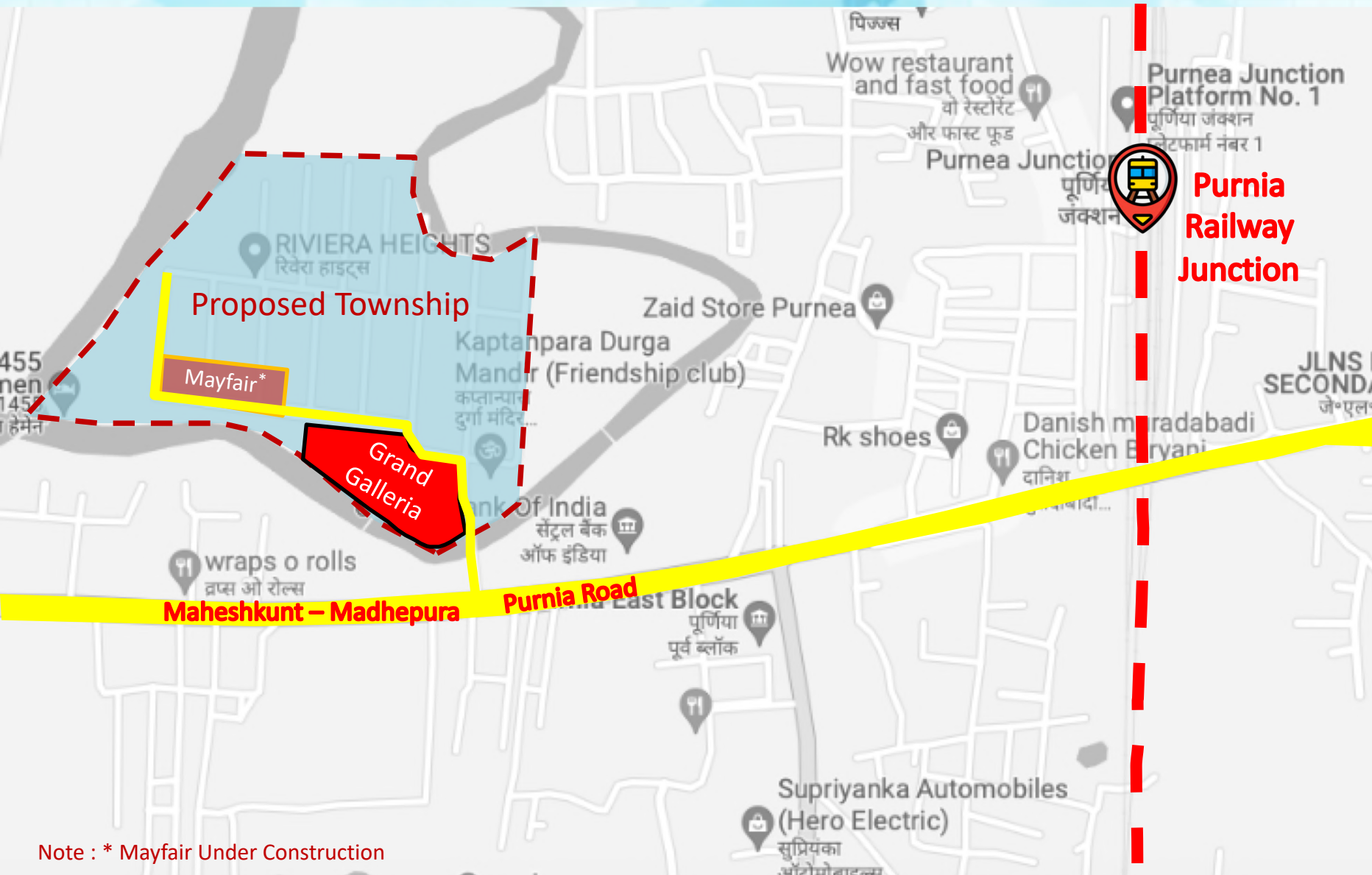
City Limits

- **First and Only Mall in the city.**
- **100% Lease Model Mall.**
- **Low CAM for better occupancy cost to retailers**
- **Prime Location – Close to the Railway Station.**
- **Very Encouraging Trading Density Numbers**
- **Educational hub for Northern Bihar**
- **Commercial Hub in the region**
- **Under Smart City Plan**
- **Developed by Reputed Developer of Purnia**

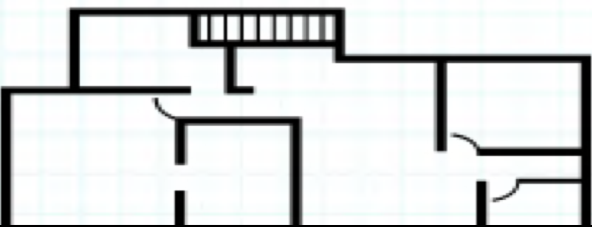


# LOCATION OF MALL

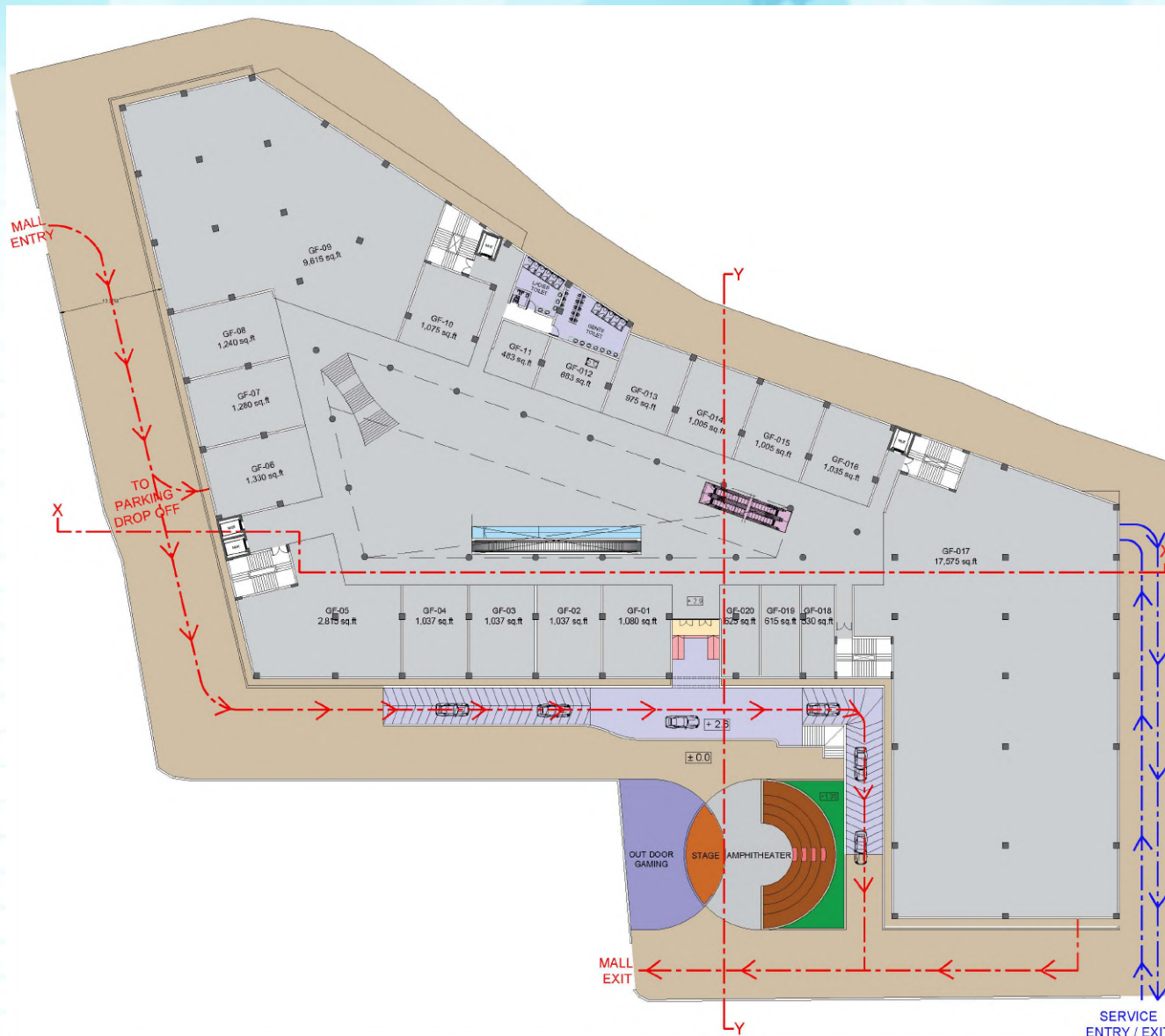




Note : \* Mayfair Under Construction



# FLOOR PLANS

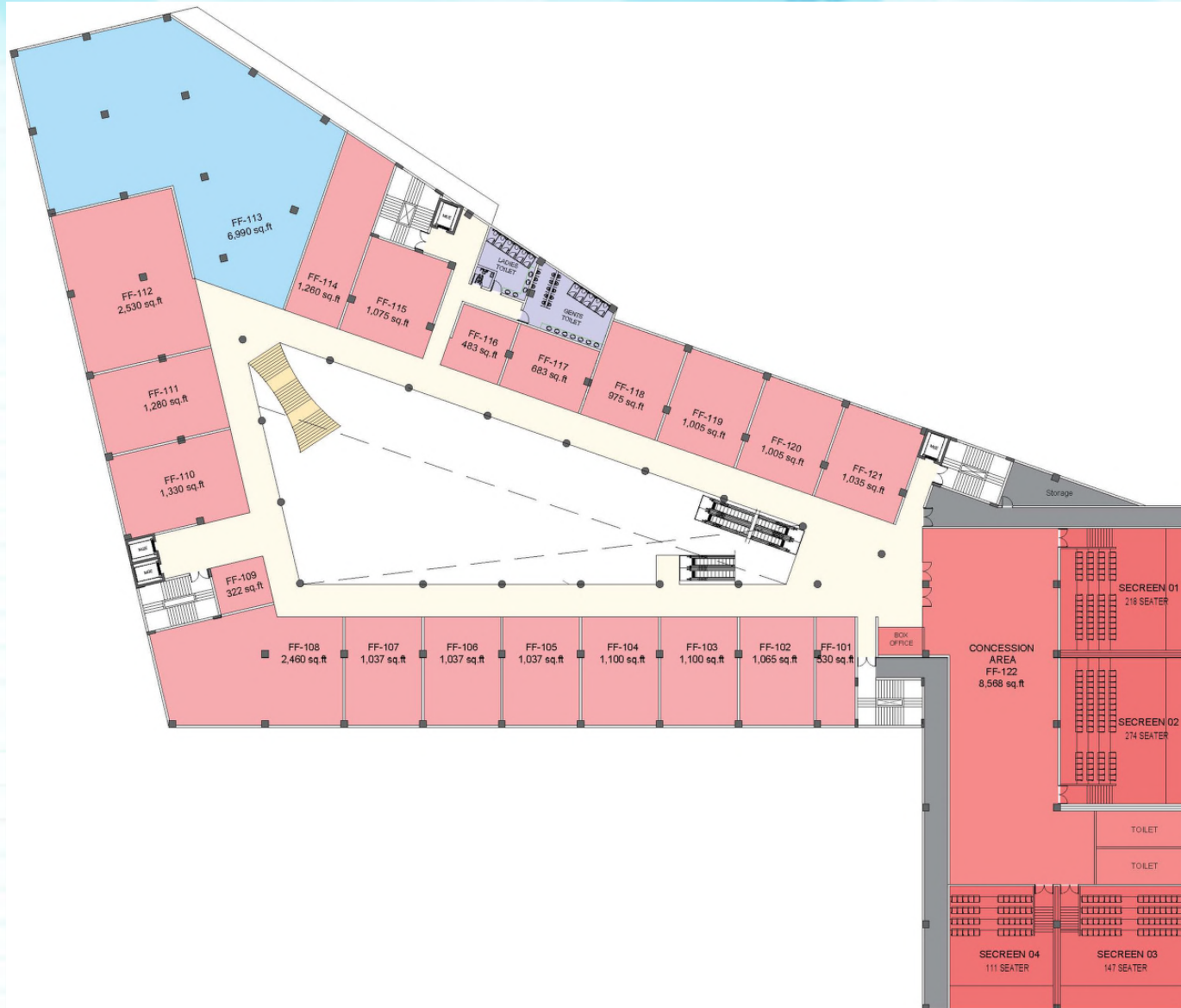


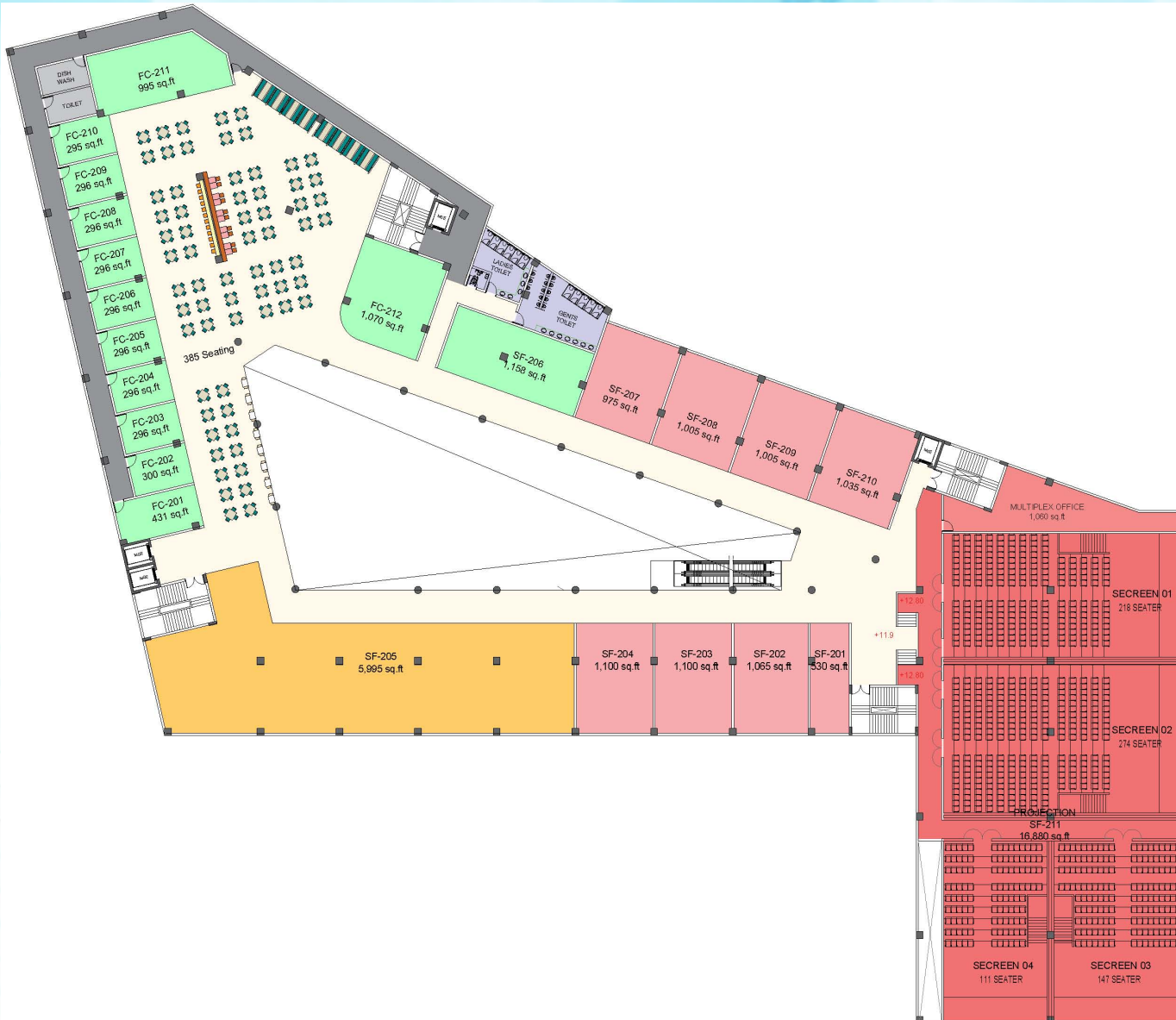


# Ground Floor Plan



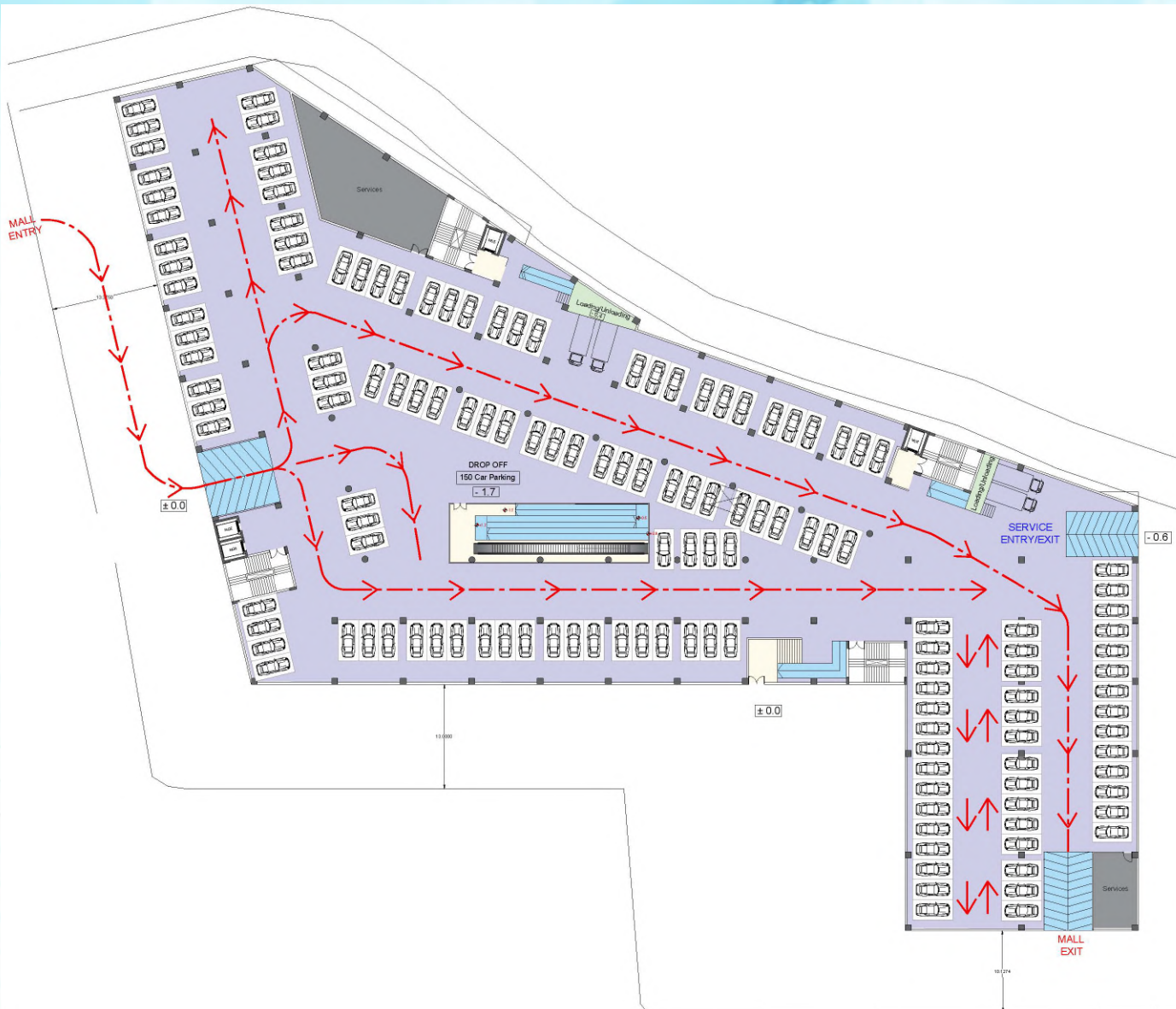
# First Floor Plan







# Parking Floor



**For further details please contact:  
*Beyond Squarefeet Advisory Pvt. Ltd.***

**Leaseline : +91.98201.88182  
leasing@beyondsquarefeet.com**

# THANK YOU!